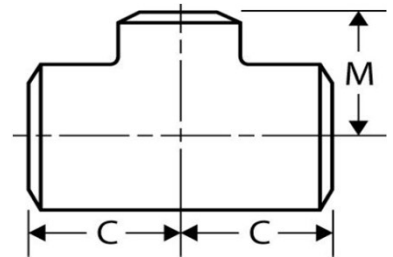




Reducing Tees

STANDARD WEIGHT/THICKNESS, Carbon Steel

Inches / Pounds



Part #	Nominal Pipe Size	Outside Diam.	Wall Thickness	Inside Diam.	Center to End (C)	Outside Diam.	Wall Thickness	Inside Diam.	Center to End (M)	Pipe Schedule	Approximate Weight (in Lbs.)
KRT.75X.5	¾ x ½	1.05	0.113	0.824	1.12	0.840	0.109	0.622	1.12	40	0.41
KRT1X.5	1 x ½	1.32	0.133	1.05	1.50	0.840	0.109	0.622	1.50	40	0.78
KRT1X.75	1 x ¾	1.32	0.133	1.05	1.50	1.05	0.113	0.824	1.50	40	0.81
KRT1.25X.5	1 ¼ x ½	1.66	0.140	1.38	1.88	0.84	0.109	0.622	1.88	40	1.3
KRT1.25X.75	1 ¼ x ¾	1.66	0.140	1.38	1.88	1.05	0.113	0.824	1.88	40	1.3
KRT1.25X1	1 ¼ x 1	1.66	0.140	1.38	1.88	1.32	0.133	1.05	1.88	40	1.3
KRT1.5X.5	1 ½ x ½	1.90	0.145	1.61	2.25	0.84	0.109	0.622	2.25	40	1.8
KRT1.5X.75	1 ½ x ¾	1.90	0.145	1.61	2.25	1.05	0.113	0.824	2.25	40	1.8
KRT1.5X1	1 ½ x 1	1.90	0.145	1.61	2.25	1.32	0.133	1.05	2.25	40	1.9
KRT1.5X1.25	1 ½ x 1 ¼	1.90	0.145	1.61	2.25	1.66	0.140	1.38	2.25	40	2
KRT2X.75	2 x ¾	2.38	0.154	2.07	2.50	1.05	0.113	0.824	1.75	40	2.5
KRT2X1	2 x 1	2.38	0.154	2.07	2.50	1.32	0.133	1.05	2.00	40	2.8
KRT2X1.25	2 x 1 ¼	2.38	0.154	2.07	2.50	1.66	0.140	1.38	2.25	40	3
KRT2X1.5	2 x 1 ½	2.38	0.154	2.07	2.50	1.90	0.145	1.61	2.38	40	3.1
KRT2.5X1	2 ½ x 1	2.88	0.203	2.45	3.00	1.32	0.133	1.05	2.25	40	4.6
KRT2.5X1.25	2 ½ x 1 ¼	2.88	0.203	2.45	3.00	1.66	0.140	1.38	2.50	40	4.8
KRT2.5X1.5	2 ½ x 1 ½	2.88	0.203	2.47	3.00	1.90	0.145	1.61	2.62	40	5.1
KRT2.5X2	2 ½ x 2	2.88	0.203	2.47	3.00	2.38	0.154	2.01	2.75	40	5.4
KRT3X1	3 x 1	3.50	0.216	3.07	3.38	1.315	0.133	1.05	2.63	40	6.5
KRT3X1.25	3 x 1 ¼	3.50	0.216	3.07	3.38	1.66	0.140	1.38	2.75	40	6.6
KRT3X1.5	3 x 1 ½	3.50	0.216	3.07	3.38	1.90	0.145	1.61	2.88	40	6.8
KRT3X2	3 x 2	3.50	0.216	3.07	3.38	2.38	0.154	2.07	3.00	40	7
KRT3X2.5	3 x 2 ½	3.50	0.216	3.07	3.38	2.88	0.203	2.47	3.25	40	7.2
KRT3.5X1.5	3 ½ x 1 ½	4.00	0.226	3.55	3.75	1.90	0.145	1.61	3.12	40	8.9
KRT3.5X2	3 ½ x 2	4.00	0.226	3.55	3.75	2.38	0.154	2.07	3.25	40	9.2
KRT3.5X2.5	3 ½ x 2 ½	4.00	0.226	3.55	3.75	2.88	0.203	2.47	3.50	40	9.4
KRT3.5X3	3 ½ x 3	4.00	0.226	3.55	3.75	3.50	0.216	3.07	3.62	40	9.8
KRT4X1.5	4 x 1 ½	4.50	0.237	4.03	4.12	1.90	0.145	1.61	3.38	40	11.2
KRT4X2	4 x 2	4.50	0.237	4.03	4.12	2.38	0.154	2.07	3.50	40	11.2
KRT4X2.5	4 x 2 ½	4.50	0.237	4.03	4.12	2.875	0.203	2.47	3.75	40	11.4
KRT4X3	4 x 3	4.50	0.237	4.03	4.12	3.50	0.216	3.07	3.88	40	11.6
KRT4X3.5	4 x 3 ½	4.50	0.237	4.03	4.12	4.00	0.226	3.55	4.00	40	11.9
KRT5X2	5 x 2	5.56	0.258	5.01	4.88	2.38	0.154	2.07	4.12	40	18.8
KRT5X2.5	5 x 2 ½	5.56	0.258	5.05	4.88	2.88	0.203	2.47	4.25	40	19
KRT5X3	5 x 3	5.56	0.258	5.05	4.88	3.50	0.216	3.07	4.38	40	19.4

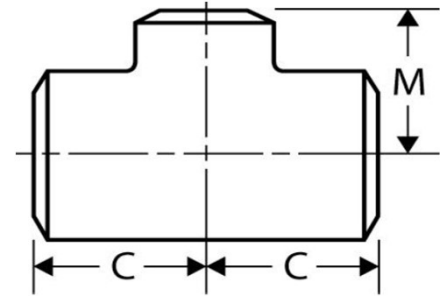
Pipe Fittings Direct
 690 Craig Rd
 Edgerton, WI 53534
 Phone: (608) 371-9313



Reducing Tees

STANDARD WEIGHT/THICKNESS, Carbon Steel

Inches / Pounds



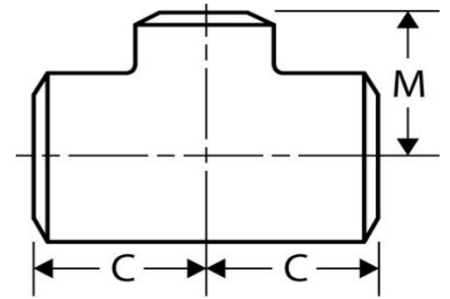
Part #	Nominal Pipe Size	Outside Diam.	Wall Thickness	Inside Diam.	Center to End (C)	Outside Diam.	Wall Thickness	Inside Diam.	Center to End (M)	Pipe Schedule	Approximate Weight (in Lbs.)
KRT5X3.5	5 x 3 1/2	5.56	0.258	5.05	4.88	4.00	0.226	3.55	4.50	40	20
KRT5X4	5 x 4	5.56	0.258	5.05	4.88	4.50	0.237	4.03	4.62	40	20.5
KRT6X2	6 x 2	6.62	0.280	6.07	5.62	2.38	0.258	2.07	4.75	40	29
KRT6X2.5	6 x 2 1/2	6.62	0.280	6.07	5.62	2.88	0.237	2.47	4.75	40	29.7
KRT6X3	6 x 3	6.62	0.280	6.07	5.62	3.50	0.226	3.07	4.88	40	30
KRT6X3.5	6 x 3 1/2	6.62	0.280	6.07	5.62	4.00	0.216	3.55	5.00	40	30
KRT6X4	6 x 4	6.62	0.280	6.07	5.62	4.50	0.203	4.026	5.12	40	30.5
KRT6X5	6 x 5	6.62	0.280	6.07	5.62	5.62	0.154	5.05	5.38	40	32
KRT8X3	8 x 3	8.62	0.322	7.981	7.00	3.50	0.216	3.068	6.00	40	52
KRT8X3.5	8 x 3 1/2	8.62	0.322	7.981	7.00	4.00	0.226	3.548	6.00	40	53
KRT8X4	8 x 4	8.62	0.322	7.981	7.00	4.50	0.237	4.026	6.12	40	53.2
KRT8X5	8 x 5	8.62	0.322	7.981	7.00	5.56	0.258	5.047	6.38	40	54
KRT8X6	8 x 6	8.62	0.322	7.981	7.00	6.62	0.280	6.065	6.62	40	56.5
KRT10X3	10 x 3	10.75	0.365	10.020	8.50	3.50	0.216	3.068	7.25	40	79
KRT10X4	10 x 4	10.75	0.365	10.020	8.50	4.50	0.237	4.026	7.25	40	82
KRT10X5	10 x 5	10.75	0.365	10.020	8.50	5.56	0.258	5.047	7.50	40	82.5
KRT10X6	10 x 6	10.75	0.365	10.020	8.50	6.62	0.280	6.065	7.62	40	85.9
KRT10X8	10 x 8	10.75	0.365	10.020	8.50	8.62	0.322	7.981	8.00	40	86.5
KRT12X4	12 x 4	12.75	0.375	12.000	10.00	4.50	0.237	4.026	8.50	**	112
KRT12X5	12 x 5	12.75	0.375	12.000	10.00	5.56	0.258	5.047	8.50	**	117
KRT12X6	12 x 6	12.75	0.375	12.000	10.00	6.62	0.280	6.065	8.62	**	118
KRT12X8	12 x 8	12.75	0.375	12.000	10.00	8.62	0.322	7.981	9.00	**	120
KRT12X10	12 x 10	12.75	0.375	12.000	10.00	10.75	0.365	10.02	9.50	**	123
KRT14X6	14 x 6	14.00	0.375	13.250	11.00	6.62	0.280	6.065	9.38	30	145
KRT14X8	14 x 8	14.00	0.375	13.250	11.00	8.62	0.322	7.981	9.75	30	146
KRT14X10	14 x 10	14.00	0.375	13.250	11.00	10.75	0.365	10.02	10.12	30	148
KRT14X12	14 x 12	14.00	0.375	13.250	11.00	12.75	0.375	12.00	10.62	30	151
KRT16X6	16 x 6	16.00	0.375	15.250	12.00	6.62	0.280	6.065	10.38	30	180
KRT16X8	16 x 8	16.00	0.375	15.250	12.00	8.62	0.322	7.981	10.75	30	190
KRT16X10	16 x 10	16.00	0.375	15.250	12.00	10.75	0.365	10.02	11.12	30	197
KRT16X12	16 x 12	16.00	0.375	15.250	12.00	12.75	0.375	12.00	11.62	30	213
KRT16X14	16 x 14	16.00	0.375	15.250	12.00	14.00	0.375	13.25	12.00	30	221



Reducing Tees

STANDARD WEIGHT/THICKNESS, Carbon Steel

Inches / Pounds



Part #	Nominal Pipe Size	Outside Diam.	Wall Thickness	Inside Diam.	Center to End (C)	Outside Diam.	Wall Thickness	Inside Diam.	Center to End (M)	Pipe Schedule	Approximate Weight (in Lbs.)
KRT18x8	18 x 8	18.00	0.375	17.250	13.50	8.62	0.322	7.981	11.75	**	216
KRT20x8	20 x 8	20.00	0.375	19.250	15.00	8.62	0.322	7.981	12.75	20	293
KRT20x10	20 x 10	20.00	0.375	19.250	15.00	10.75	0.365	10.02	13.12	20	305
KRT20x12	20 x 12	20.00	0.375	19.250	15.00	12.75	0.375	12.00	13.62	20	315
KRT20x14	20 x 14	20.00	0.375	19.250	15.00	14.00	0.375	13.25	14.00	20	327
KRT20x16	20 x 16	20.00	0.375	19.250	15.00	16.00	0.375	15.25	14.00	20	339
KRT20x18	20 x 18	20.00	0.375	19.250	15.00	18.00	0.375	17.25	14.50	20	352
KRT24x10	24 x 10	24.00	0.375	23.250	17.00	10.75	0.365	10.02	15.12	20	447
KRT24x12	24 x 12	24.00	0.375	23.250	17.00	12.75	0.375	12.00	15.62	20	450
KRT24x14	24 x 14	24.00	0.375	23.250	17.00	14.00	0.375	13.25	16.00	20	465
KRT24x16	24 x 16	24.00	0.375	23.250	17.00	16.00	0.375	15.25	16.00	20	475
KRT24x18	24 x 18	24.00	0.375	23.250	17.00	18.00	0.375	17.25	16.50	20	487
KRT24x20	24 x 20	24.00	0.375	23.250	17.00	20.00	0.375	19.25	17.00	20	500
KRT30x14	30 x 14	30.00	0.380	29.240	22.00	14.00	0.380	13.25	19.00	**	681
KRT30x16	30 x 16	30.00	0.380	29.240	22.00	16.00	0.380	15.25	19.00	**	704
KRT30x18	30 x 18	30.00	0.380	29.240	22.00	18.00	0.380	17.24	19.50	**	727
KRT30x20	30 x 20	30.00	0.380	29.240	22.00	20.00	0.380	19.24	20.00	**	749
KRT30x22	30 x 22	30.00	0.380	29.240	22.00	22.00	0.380	21.25	20.50	**	772
KRT30x24	30 x 24	30.00	0.380	29.240	22.00	24.00	0.380	23.24	21.00	**	795
KRT30x26	30 x 26	30.00	0.380	29.240	22.00	26.00	0.380	25.25	21.50	**	817
KRT30x28	30 x 28	30.00	0.380	29.240	22.00	28.00	0.380	27.25	21.50	**	834
KRT36x16	36 x 16	36.00	0.380	35.240	26.50	16.00	0.380	15.25	22.00	**	1,015
KRT36x18	36 x 18	36.00	0.380	35.240	26.50	18.00	0.380	17.24	22.50	**	1,044
KRT36x20	36 x 20	36.00	0.380	35.240	26.50	20.00	0.380	19.24	23.00	**	1,072
KRT36x22	36 x 22	36.00	0.380	35.240	26.50	22.00	0.380	21.25	23.50	**	1,100
KRT36x24	36 x 24	36.00	0.380	35.240	26.50	24.00	0.380	23.24	24.00	**	1,129
KRT36x26	36 x 26	36.00	0.380	35.240	26.50	26.00	0.380	25.25	24.50	**	1,158
KRT36x28	36 x 28	36.00	0.380	35.240	26.50	28.00	0.380	27.25	24.50	**	1,181
KRT36x30	36 x 30	36.00	0.380	35.240	26.50	30.00	0.380	29.24	25.00	**	1,207
KRT36x32	36 x 32	36.00	0.380	35.240	26.50	32.00	0.380	31.25	25.50	**	1,237
KRT36x34	36 x 34	36.00	0.380	35.240	26.50	34.00	0.380	33.25	26.00	**	1,264

* Dimensions conform to ASME B16.9

* Material conforms to ASTM SA-234 Grade B